

# SALTBURN VALLEYS

INFORMATION ABOUT FORTHCOMING  
CLEARANCE WORKS ON THE PATHS AND  
WOODLANDS OF THE VALLEY GARDENS

One of the key recommendations in the Conservation Management Plan is to clear the northern bank of the valley of naturally regenerated sycamore. This will have the result of substantially altering the appearance of the now overgrown Valley Gardens. In accordance with the adopted conservation policy and vision, this was made the subject of a programme of public consultation of which this leaflet is part.





In December 2018 Chris Burnett Associates were commissioned by Saltburn Valleys CIO (Charitable Incorporated Organisation) with support from Redcar and Cleveland Borough Council and with grant assistance from Historic England, to prepare a Conservation Management Plan for Saltburn Valley Gardens, one of the principal areas of public open space in Saltburn-by-the-Sea. This leaflet gives information about their findings and proposals for the future management of the Valley Gardens.

The Valley Gardens form part of the late Victorian seaside resort of Saltburn-by-the-Sea which was developed between 1861 and 1873 by the Quaker, Henry Pease. The subsequent layout of the Valley Gardens, or Pleasure Grounds as they were known, was accomplished quickly following the appointment of landscape architect Joseph Newton.

Much of the gardens' layout is still traceable today but a lack of maintenance over many years has contributed significantly to its decline such that it is now on Historic England's At Risk register. Some key elements of the gardens as they exist today are:

- The Italian Gardens
- The Tea Rooms
- Saltburn Miniature Railway
- The Albert Memorial
- The Walled Garden
- The Woodland Centre
- The Play Area

As a result of the research and condition survey, various issues stood out as being critical for the survival and legibility of the historic design and future conservation of the gardens:

- Most paths on the valley sides are in a poor state with little in the way of surfacing and are often narrow due to encroaching vegetation.
- Some paths, around 10%, have been lost altogether or closed due to the danger of subsidence
- The openness of the initial design has largely been lost and has been replaced by dense naturally regenerating sycamore woodland in a large area of the gardens. As a result, most of the key views up and down the valley, and also to the sea, have been lost.
- The Albert Memorial is in poor condition and subject to graffiti and views of this pivotal designed element of the gardens have been lost both up and down the valley.

A vision and policies were drawn up to act as the foundation for the future conservation of the garden with the following commensurate benefits:

- The provision of additional seating and an improved and resurfaced path network would increase access and provide opportunities for gentle exercise.
- Thinning of naturally regenerating sycamore, with key mature trees retained would reinstate original views and improve the long term sustainability of any restored path network.
- Thinning of woodland and mature shrubbery around key components of the design, such as the Albert Memorial and the Italian Gardens, would restore their status as part of a significant historic designed landscape.

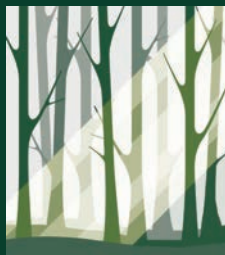


## CONTACT Us

email [info@saltburnvalleys.org.uk](mailto:info@saltburnvalleys.org.uk)

telephone 01287 201625

web [saltburnvalleys.org.uk](http://saltburnvalleys.org.uk)



# SALTBURN VALLEYS

## SPONSORS & FUNDERS

Our funders currently include:

- Historic England
- Redcar and Cleveland Borough Council
- Skelton and Brotton Parish Council
- Saltburn, Marske and New Marske Parish Council
- National Lottery Heritage Fund
- Coastal Revival Fund



A complete version of the report can be obtained from the Registered Office:

Saltburn Valleys CIO  
c/o The Conference Centre,  
Saltburn Learning Campus,  
Marske Mill Lane,  
Saltburn-by-the-Sea,  
North Yorkshire TS12 1HJ

Charity Number: 1174428